

LEASE

Ground Floor Retail

519 HUEY P LONG AVENUE

Gretna, LA 70053

PRESENTED BY:

KATE WHALEN

O: 504.264.6145 x8

kate.whalen@svn.com

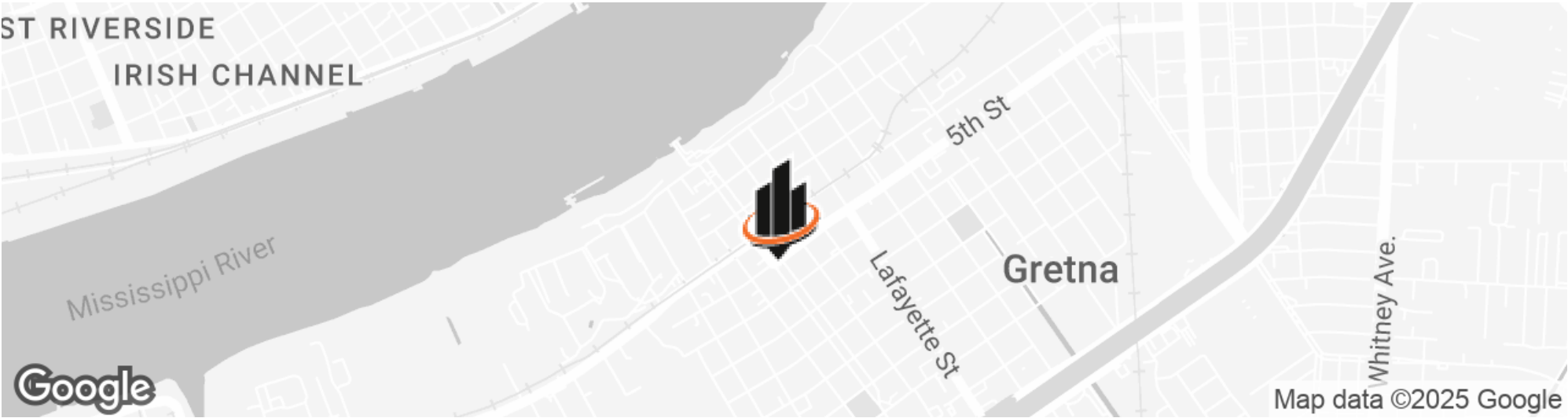
HAYDEN DAVIS

O: 504.264.6145 x117

hayden.davis@svn.com



PROPERTY SUMMARY



OFFERING SUMMARY

LEASE RATE:	\$22.75 SF/yr (MG)
AVAILABLE SF:	1,530 SF

PROPERTY OVERVIEW

Available immediately is 1,870 square feet of retail space on the ground floor of the historic German Cultural Center, located in the heart of Gretna. The space is ideal for a neighborhood market, coffee shop, deli, or wine shop.

An outdoor patio with seating is also in the works, as an added amenity to the space. There is an existing commercial grade kitchen which includes an oven, hood, fridge, dishwasher and sink. Ownership is also willing to provide an above-market build-out allowance to qualified tenants.

The second floor of the building is a recently completed co-working hub, Primary Workspace, which houses over 90 desks, giving the retail space a strong customer base in the building. The building is also situated just a few blocks from the Jefferson Parish Courthouse, providing a consistent additional customer base.

Contact Kate Whalen or Hayden Davis for details or to schedule a tour:
Kate.Whalen@SVN.com or Hayden.Davis@SVN.com

KATE WHALEN
O: 504.264.6145 x8
kate.whalen@svn.com

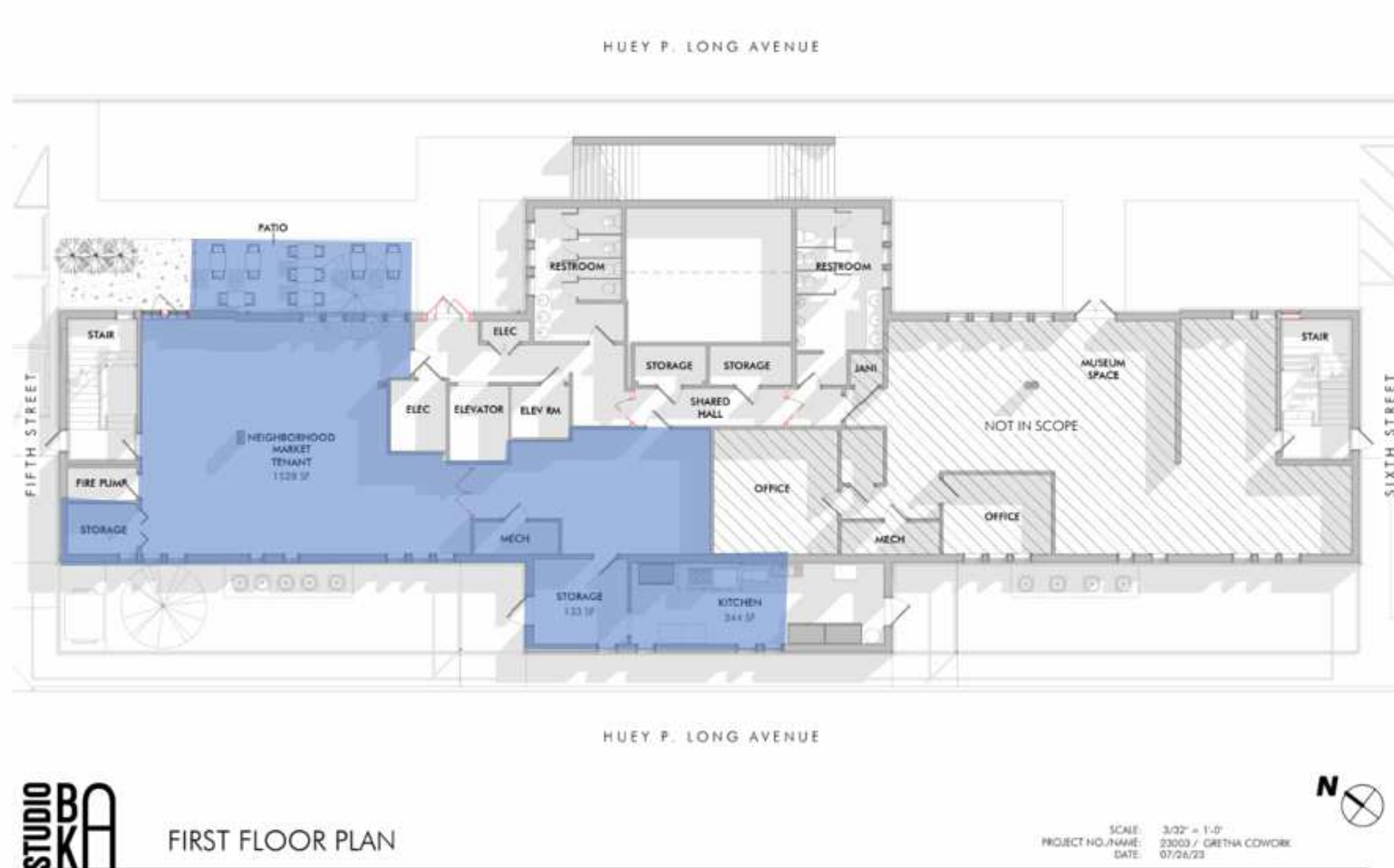
HAYDEN DAVIS
O: 504.264.6145 x117
hayden.davis@svn.com



KATE WHALEN
O: 504.264.6145 x8
kate.whalen@svn.com

HAYDEN DAVIS
O: 504.264.6145 x117
hayden.davis@svn.com

FLOOR PLAN - AVAILABLE SPACE HIGHLIGHTED



KATE WHALEN
O: 504.264.6145 x8
kate.whalen@svn.com

HAYDEN DAVIS
O: 504.264.6145 x117
hayden.davis@svn.com